

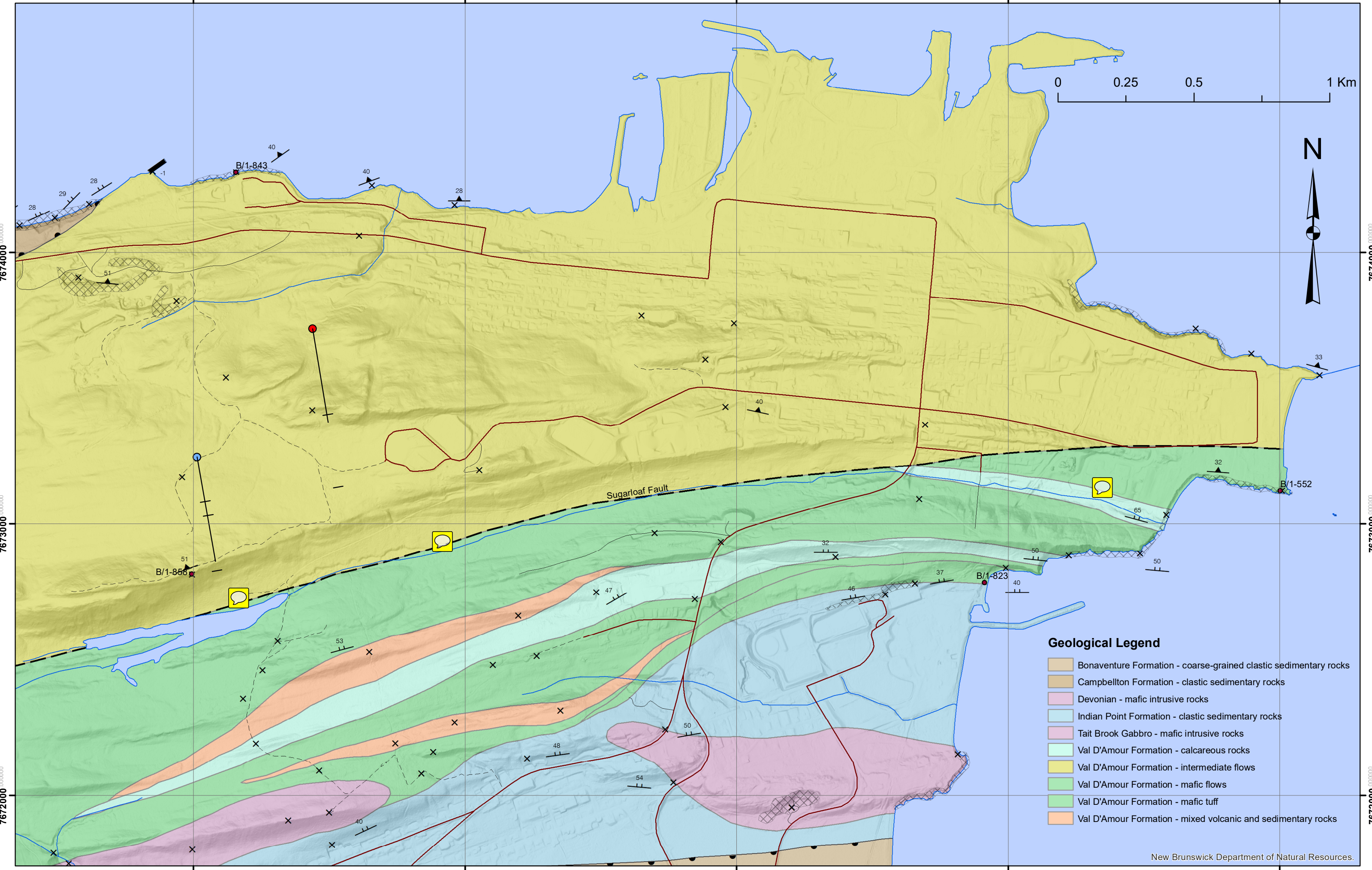
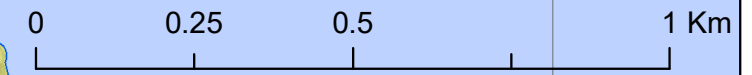
2507000

2508000

2509000

2510000

2511000



Sugarloaf Fault



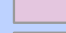
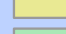
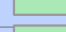
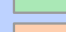
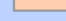
B/1-856

B/1-843

B/1-823

B/1-552

**Geological Legend**

-  Bonaventure Formation - coarse-grained clastic sedimentary rocks
-  Campbellton Formation - clastic sedimentary rocks
-  Devonian - mafic intrusive rocks
-  Indian Point Formation - clastic sedimentary rocks
-  Tait Brook Gabbro - mafic intrusive rocks
-  Val D'Amour Formation - calcareous rocks
-  Val D'Amour Formation - intermediate flows
-  Val D'Amour Formation - mafic flows
-  Val D'Amour Formation - mafic tuff
-  Val D'Amour Formation - mixed volcanic and sedimentary rocks

2507000

2508000

2509000

2510000

2511000

7674000

7673000

7672000

7674000

7673000

7672000